

VLAN-400sd

Networkable 4-Channel Voice Logger

User's Manual
Second Edition

(C) 2013-2017 Eletech Enterprise Co., Ltd
All Rights Reserved

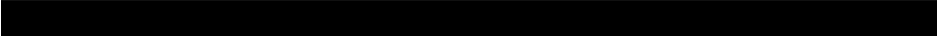


TABLE OF CONTENTS

1. Introduction 2

 1.1 System Summary2

 1.2 Package Contents3

 1.3 Panel Descriptions4

2. Installation 5

 2.1 Connecting With Analog Phone Lines5

 2.2 Connecting With Digital Phone Lines6

 2.3 Connecting With A PC7

 2.4 Configuring IP Address8

 2.5 Factory Default Settings10

3. Operation 11

 3.1 Device Login11

 3.2 Record Search12

 3.3 Channel Settings15

 3.4 Record Settings17

 3.5 Storage Settings19

 3.6 Network Settings22

1. Introduction

1.1 System Summary

The VLAN-400sd is a state-of-the-art 4-channel voice logger built upon a Linux based embedded hardware platform. It is capable of recording phone calls and storing them internally without the need for a host computer. Compared to other network based voice loggers that must upload data to a host computer in real-time due to lack of internal storage, the VLAN-400sd provides much more reliable operation.

The record data stored inside the VLAN-400sd can be searched and reviewed from a remote PC via the network, using just a browser program such as the Internet Explorer. System configuration and management are also done in the same manner, requiring no proprietary software.

Instead of storing the records into the internal memory, the system can be configured to store the records into a USB drive plugged into the unit. The USB drive can then be taken away by the user if privacy is needed.

Optionally the records can also be uploaded to a server for centralized data management. The upload can be automated to take place immediately after each call, or at specific times of the day on a regular basis. This feature allows a large number of VLAN-400sd units to be integrated into and managed upon one centralized system.

1.2 Package Contents

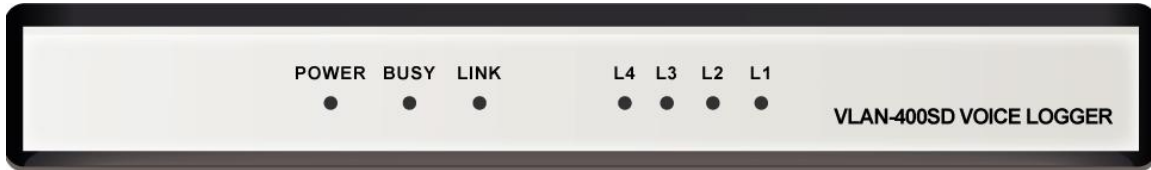
The VLAN-400SD package contains:

QUANTITY	ITEM DESCRIPTION
1	VLAN-400SD
4	RJ-11 Telephone Cord
4	RJ-11 Y-splitter Connector
1	RJ-45 Network Cable
1	Power Adapter
1	Installation CD

If any item is missing or broken upon opening of the package, please contact your dealer.

1.3 Panel Descriptions

Front Panel



Indicator	Color	Status	Indicating
POWER	Green	- Solid	- Power On
		- Off	- Power Off
BUSY	Red	- Flashing	- Writing data – do not turn off power.
		- Off	- Not writing data
LINK	Green	- Solid	- Ethernet link established
		- Flashing	- Ethernet data activity
		- Off	- Ethernet link not established
L1 ~ L4	Red	- On	- Channel is recording
		- Off	- Channel is not recording

Rear Panel



LINE1~LINE4: RJ-11 jacks for connecting analog phone lines or audio signal (center two wires).

RESET: This button can be used to reset all settings (including IP address, user name, password and etc.) to the factory default, in case the user name and/or password are forgotten. With the power turned on, press down the button and do not release it until Power, Busy and Link indicators are all turned on (in about 7 seconds). The factory default settings are:

IP address: 192.168.1.100

User Name: vlansd

Password: 1234

USB: For connecting an external USB flash drive or USB hard drive. Note, the file system on the USB device must be either FAT or FAT32.

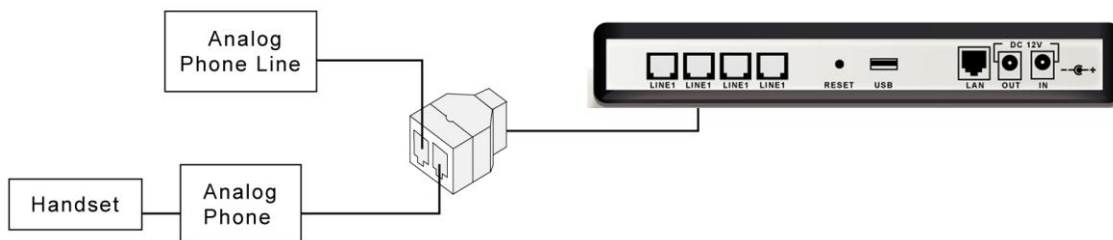
LAN: RJ-45 Ethernet jack for connecting to the network.

DC 12V: Connect the power supply to the IN jack.

2. Installation

2.1 Connecting With Analog Phone Lines

Connect analog telephone lines as shown in the following diagram.



Analog phone lines use standard signaling and allow the detection of the handset status (lifted up or hung up). The handset status can be used to automate the recording process – start recording when the handset is lifted up, stop recording when the handset is hung up. This is called the Local Phone Start Mode which is the preferred start mode for analog phone lines.

When an analog phone system is in place there are two ways to connect the logger: the trunk side (where lines come into the phone system) and the station side (where lines go out to the stations). Both have pros and cons as described below.

Trunk Side Recording

Pros

- One logger channel can record multiple stations.

Cons

- Unable to record station to station calls.
- Files will be associated with the trunk line instead of the station, making it hard to identify and retrieve files for a particular station.

Station Side Recording

Pros

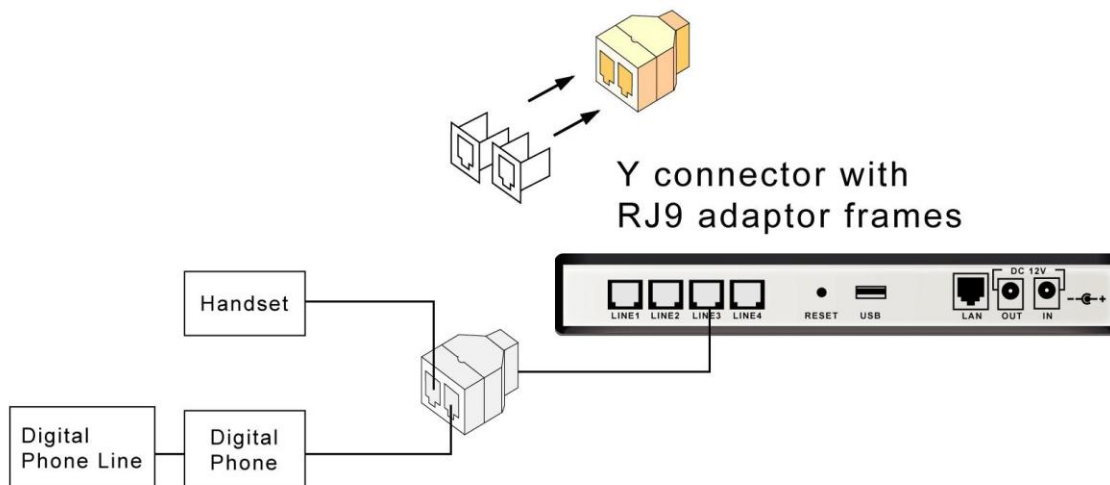
- Able to record station to station calls.
- Easy to identify and retrieve files for a particular station.

Cons

- One logger channel required for each station.

2.2 Connecting With Digital Phone Lines

Connect digital telephone lines as shown in the following diagram.



Disconnect the handset from the phone and reconnect it according to the diagram above.

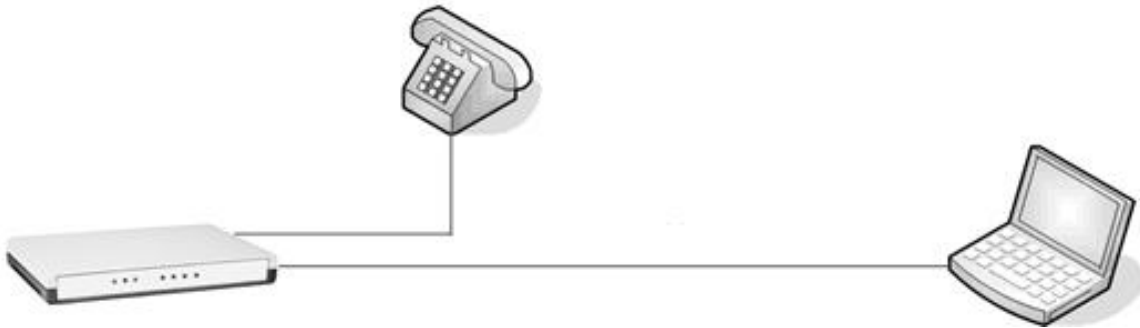
Handset status cannot be detected on digital phone lines since they do not use standard telephone signaling. Therefore the VOX Start Mode must be used instead of the Local Phone Start Mode. The VOX Start Mode detects loudness level on the line and uses it to automate the recording process: start recording when the sound is loud (someone talking), stop recording when the sound is weak (no talking) over a certain period of time. Sometimes, when there are long periods of silence in the conversation, the call may be recorded into multiple files.

2.3 Connecting With A PC

In order to allow the user to retrieve and review record data, the logger must be connected with a PC in one of the following two ways.

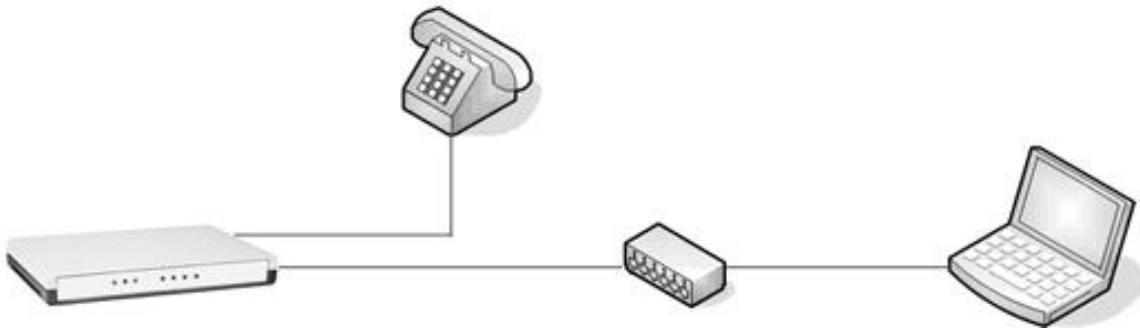
Direct connection

Direct connection is rarely used because it requires the PC to be physically close to the logger. If multiple loggers are to be connected to the same PC, a separate Ethernet port is required for each logger.



Network connection

The PC and the logger are connected via a hub, a router or over the Internet. This allows the same PC to access multiple loggers, and the same logger to be accessible to multiple PC's.



2.4 Configuring the IP Address

In order for the logger and the PC to communicate with each other, their IP addresses must be in the same subnet. If the logger's default subnet address (specified in the Default Parameters section in this manual) is not the same as the host computer's, then one of them (usually the logger's) needs to be changed.

The ETM program found on the installation CD can be used to change the logger's IP address. The logger's new IP address must be in the same subnet as the host computer, and not conflict with any other devices on the network.

To find out the subnet address of the PC, open the Command Prompt in Windows Accessories. Type "ipconfig" and press the Enter key. The IP address of the PC will be displayed. The subnet address usually consists of the first three octets. For example, if the IP address is "192.168.1.5" then the subnet address is "192.168.1". In this case the logger could use an address like "192.168.1.88" if it's not already used by another device on the same network.

Note that the logger's new IP address must not conflict with (i.e. not to be exactly the same as) any other devices on the same network. If you are not sure what IP address to use, please consult with your IT personnel.

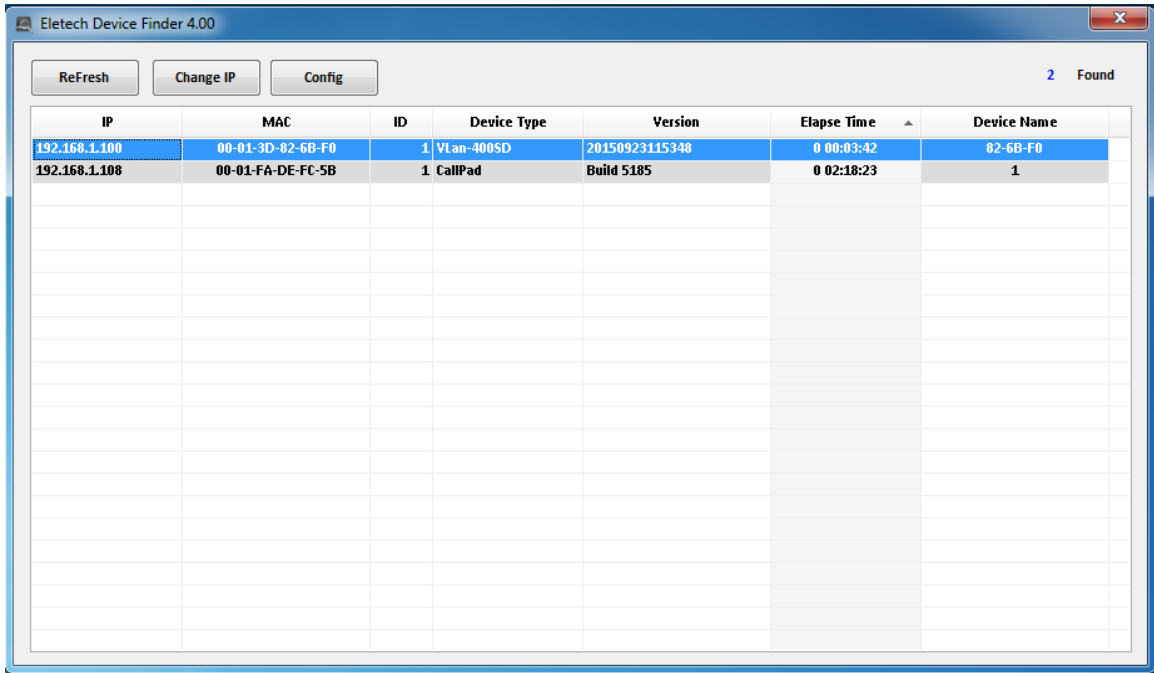
When installing multiple loggers, do not connect all loggers to the network at once. Always add one logger to the network at a time in order to avoid address conflict, since all loggers come with the same default IP address.

It is recommended to put a label with the IP address info on the logger for identification purposes. This is especially helpful when multiple loggers are installed on the same network.

Before configuring the IP address, the ETM program must be installed first. Just double click "setup.exe" on the installation CD and follow the instructions on the screen. Afterwards a short cut to ETM will be created on the desktop.

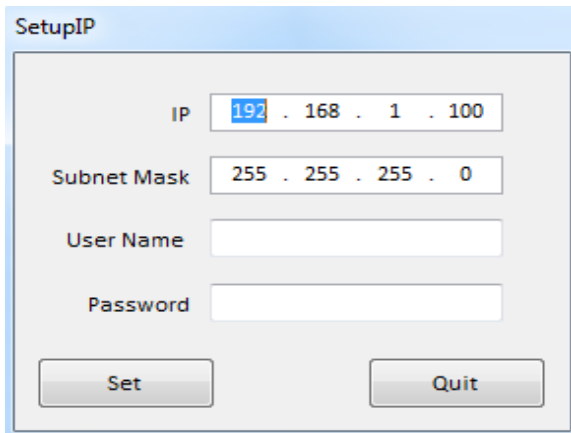
After the ETM program has been installed, follow these steps to configure the IP address:

1. Run the ETM program. A window similar to the following will appear. Note that the display may include loggers already installed, but the new one can be easily identified by its default IP address of 192.168.1.100.



Note that it may be necessary to disable the (Windows' built-in and/or any other installed) firewall in order for ETM to find the new logger. Windows' built-in firewall can be disabled by opening the Security Center in the Control Panel. To disable other installed firewall, please refer to its manual. The firewall should be re-enabled after changing the IP address.

2. Click and highlight the target device. Then click the "Config IP" button. The following window will appear. Change the IP address, enter username and password then click OK. By default, username is "vlansd" and password is "1234". Do not use the IP address shown below – it's just an example.



Note that the IP address will fail to change if incorrect username or password is entered.

2.5 Factory Default Settings

The following are the default settings of a logger which is either brand new or has just been manually reset by pressing the reset button. For your own record, you may write the configured values on the space to the right.

IP Address: 192.168.1.100 _____

Subnet Mask: 255.255.255.0 _____

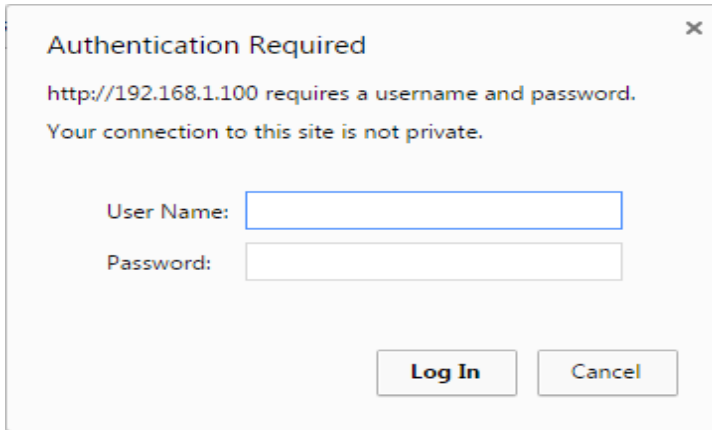
User Name: vlansd _____

Password: 1234 _____

3. Operation

3.1 Device Login

1. Always use the Chrome web browser. Do not use IE or Firefox.
2. Go to the logger's IP address (e.g <http://192.168.1.100>) and enter **User name** (default: vlansd) and **Password** (default: 1234). Then click **OK**.



Authentication Required

http://192.168.1.100 requires a username and password.
Your connection to this site is not private.

User Name:

Password:

Log In **Cancel**

3. A screen similar to the following will appear. It displays various messages as the system undergoes initialization which ends when "VLan-400SD Ready" is shown. The system will then automatically go to the Record Search screen (or the last screen of your previous visit).

3.2 Record Search

VLAN-400SD

Record Search

Channel Settings

Record Settings

Storage Settings

Network Settings

2013/06/27
11:13:18

Record Search

Time Period

2013 Year 6 Month 27 Day 0 Hour 0 Minute 0 Second

2013 Year 6 Month 27 Day 11 Hour 10 Minute 31 Second

Channel Ch1 Ch2 Ch3 Ch4

Agent Name

Phone Number

Caller ID

DTMF

Ring Equal to More than Less than Times

Record Length Equal to More than Less than Seconds

OK

Search keys are described below. If more than one search keys are enabled, then a record must match all search keys in order to be found.

Time Period

Check the checkbox to enable. The search will be confined to the specified date/time period.

Channel

Select one or more channels by checking the checkboxes.

Agent Name

Name of the agent on the call. See Record Settings for more info.

Phone Number

Phone number of the agent on the call. See Record Settings for more info.

Caller ID

The caller ID string of an inbound call. The string may be partial.

DTMF

The touch tone(s) detected during the call, such as the phone number of an outbound call. The string may be partial. Note that touch tone detection may be disabled if desired – see Record Settings for more info.

Rings

The number of rings before the call is answered – equal to, more than or less than. This key is useful only when the Start Method is set to Local Phone.

Record Length

The length of the record in seconds – equal to, more than or less than.

Click OK to start searching. If no records are found then a “No Data Found” dialog box will appear. Otherwise, a screen similar to the following will appear.

VLAN-400sd User's Manual

VLAN-400SD

Record Search

Channel Settings

Record Settings

Storage Settings

Network Settings

Device Name	Agent Name	Phone Number	Rings	Start Time	Stop Time	Record Length	Caller ID	DTMF
Ch2			1	2013/06/26 13:15:22	2013/06/26 13:15:49	27		
Ch4			1	2013/06/26 13:15:21	2013/06/26 13:15:48	27		
Ch3			1	2013/06/26 13:15:22	2013/06/26 13:15:49	27		
Ch3			0	2013/06/26 13:12:46	2013/06/26 13:14:12	86		109
Ch4			0	2013/06/26 13:12:46	2013/06/26 13:14:12	86		109
Ch2			0	2013/06/26 13:12:46	2013/06/26 13:14:12	86		109
Ch4			1	2013/06/26 11:23:34	2013/06/26 11:29:21	347	22427354	111
Ch3			1	2013/06/26 11:23:34	2013/06/26 11:29:21	347	22427354	11131
Ch2			1	2013/06/26 11:23:33	2013/06/26 11:29:20	347	22427354	1111
Ch2			0	2013/06/26 11:18:22	2013/06/26 11:18:36	14		201
Ch4			0	2013/06/26 11:18:22	2013/06/26 11:18:36	14		201
Ch3			0	2013/06/26 11:18:22	2013/06/26 11:18:36	14		201
Ch4			0	2013/06/26 11:01:15	2013/06/26 11:01:54	39		0168
Ch2			0	2013/06/26 11:01:15	2013/06/26 11:01:54	39		0168
Ch3			0	2013/06/26 11:01:15	2013/06/26 11:01:54	39		0168
Ch2			0	2013/06/26 11:00:34	2013/06/26 11:01:14	40		016501660168
Ch4			0	2013/06/26 11:00:35	2013/06/26 11:01:15	40		016501660168

2013/06/27 11:14:49

Page: 1/3 Total Records: 133

Mark Play Pause Stop Repeat Elapsed

First Page Page UP Page Down Last Page

New Search

START MARK END MARK PLAY MARK TIME

The results are listed in 'pages', and in reverse chronological order (newest first).

Each page contains up to 50 records by default. If there are more than 50 records, the last page will be displayed. To go to another page, click **Page Up**, **Page Down**, **First Page** or **Last Page**. To start a new search, click the **New Search** button.

To play a record, simply double click it on any part of the record except the Start Time field. As the record is being played, the pointer on the progress bar indicates the current playback position. Also, the PLAY button turns into the PAUSE button.

VLAN-400SD

Record Search

Channel Settings

Record Settings

Storage Settings

Network Settings

Device Name	Agent Name	Phone Number	Rings	Start Time	Stop Time	Record Length	Caller ID	DTMF
Ch3			0	2013/06/26 11:00:35	2013/06/26 11:01:15	40		016501660168
Ch1			0	2013/06/26 11:00:31	2013/06/26 11:00:34	3		
Ch4			0	2013/06/26 10:29:31	2013/06/26 10:37:47	496		109220207
Ch3			0	2013/06/26 10:29:31	2013/06/26 10:37:47	496		109220207
Ch1			0	2013/06/26 10:29:31	2013/06/26 10:37:47	496		1092420207
Ch2			0	2013/06/26 10:29:31	2013/06/26 10:37:47	496		109220207
Ch1			0	2013/06/26 10:16:25	2013/06/26 10:17:23	58		213
Ch4			0	2013/06/26 10:16:25	2013/06/26 10:17:23	58		213
Ch2			0	2013/06/26 10:16:25	2013/06/26 10:17:23	58		213
Ch3			0	2013/06/26 10:16:24	2013/06/26 10:17:22	58		213
Ch4			0	2013/06/25 17:31:15	2013/06/25 17:32:01	46		02649
Ch3			0	2013/06/25 17:31:15	2013/06/25 17:32:01	46		026494
Ch1			0	2013/06/25 17:31:15	2013/06/25 17:32:01	46		0264984
Ch2			0	2013/06/25 17:31:15	2013/06/25 17:32:01	46		0264984
Ch1			0	2013/06/25 17:27:43	2013/06/25 17:30:07	144	22427354	
Ch3			0	2013/06/25 17:27:43	2013/06/25 17:30:07	144	22427354	
Ch2			0	2013/06/25 17:27:43	2013/06/25 17:30:07	144	22427354	

2013/06/27 11:19:47

Page: 2/3 Total Records: 133

Mark Play Pause Stop Repeat Elapsed

First Page Page UP Page Down Last Page

New Search

03:07 08:15

START MARK END MARK PLAY MARK TIME

Sometimes it is desired to play a particular section in a record. To do this you will need to play the record and mark the section by clicking the Start Mark and the End Mark respectively at the proper point. You may also drag these marks to the desired places directly. Then click the Play Mark button to play the section once, or the two-arrow button to play it repeatedly.

The screenshot displays the VLAN-400SD interface. On the left, there is a sidebar with the title 'VLAN-400SD' and a menu containing 'Record Search', 'Channel Settings', 'Record Settings', 'Storage Settings', and 'Network Settings'. The main area features a table with the following columns: Device Name, Agent Name, Phone Number, Rings, Start Time, Stop Time, Record Length, Caller ID, and DTMF. The table lists various records with their respective details. Below the table, there are navigation buttons: 'Page: 2/3', 'Total Records: 133', 'First Page', 'Page UP', 'Page Down', and 'Last Page'. A 'New Search' button is also present. At the bottom, there is a playback control panel with buttons for 'Mark', 'Play', 'Pause', 'Stop', 'Repeat', and 'Elapsed'. A progress bar shows the current time at 04:31, with a total duration of 08:15. Below the progress bar are buttons for 'START MARK', 'END MARK', 'PLAY MARK', and 'TIME'.

Device Name	Agent Name	Phone Number	Rings	Start Time	Stop Time	Record Length	Caller ID	DTMF
Ch3			0	2013/06/26 11:00:35	2013/06/26 11:01:15	40		016501660168
Ch1			0	2013/06/26 11:00:31	2013/06/26 11:00:34	3		
Ch4			0	2013/06/26 10:29:31	2013/06/26 10:37:47	496		109220207
Ch3			0	2013/06/26 10:29:31	2013/06/26 10:37:47	496		109220207
Ch1			0	2013/06/26 10:29:31	2013/06/26 10:37:47	496		1092420207
Ch2			0	2013/06/26 10:29:31	2013/06/26 10:37:47	496		109220207
Ch1			0	2013/06/26 10:16:25	2013/06/26 10:17:23	58		213
Ch4			0	2013/06/26 10:16:25	2013/06/26 10:17:23	58		213
Ch2			0	2013/06/26 10:16:25	2013/06/26 10:17:23	58		213
Ch3			0	2013/06/26 10:16:24	2013/06/26 10:17:22	58		213
Ch4			0	2013/06/25 17:31:15	2013/06/25 17:32:01	46		02649
Ch3			0	2013/06/25 17:31:15	2013/06/25 17:32:01	46		026494
Ch1			0	2013/06/25 17:31:15	2013/06/25 17:32:01	46		0264984
Ch2			0	2013/06/25 17:31:15	2013/06/25 17:32:01	46		0264984
Ch1			0	2013/06/25 17:27:43	2013/06/25 17:30:07	144	22427354	
Ch3			0	2013/06/25 17:27:43	2013/06/25 17:30:07	144	22427354	
Ch2			0	2013/06/25 17:27:43	2013/06/25 17:30:07	144	22427354	

To toggle between relative and absolute time during playback, click the Time button.

Copying a Record

This function copies the selected record from the logger to the PC for whatever purposes it may serve. To copy a record, move the cursor over the record's Start Time field. After the cursor changes to a "hand", right-click and select "save as". In the dialog box that follows, then select the drive and the folder to save.

Although this function allows one to backup individual records to the PC, it is not meant to be an archiving function. In many cases the system's internal memory is big enough to store several months' worth of records, and the need for archiving may be eliminated. But if needed, records can be sent to a remote server via the network for centralized archiving and management. Please refer to Storage Settings for more info.

3.3 Channel Settings

Channel

Select the channel to be configured. Each channel must be configured separately.

Agent Name (optional)

The name of the agent to be associated with this channel.

Phone Number (optional)

The phone/station number to be associated with this channel.

Max. Record Length

The maximum length per record. If the length of the call exceeds this value, it will be broken into multiple records. The default value is 1800 seconds (30 minutes), and the maximum value is 3600 seconds.

Min. Record Length

Calls shorter than this length will not be recorded. Note that if the call exceeds this length then the entire call is recorded, not just the portion of the call after this length.

Recording Controlled by DTMF

If this function is disabled then every record will be saved. If this function is enabled then each record can be selectively saved or discarded by pressing a string of touch tones during or at the end of the call. It is recommended that the touch tone string contains at least three touch tones to prevent accidental, unintentional operation.

The touch tone string can be used to either save or discard the record. If most records are to be discarded then choose "Keep Record" - a record will be saved if and only if the touch tone string is pressed. If most records are to be saved then choose "Delete Record" - a record will be discarded if and only if the touch tone string is pressed.

Work Hours

Always – Channel will always be enabled.

Never – Channel will always be disabled.

Customize – Specify up to four time periods expressed in the 24-hour time format (HH:MM:SS).

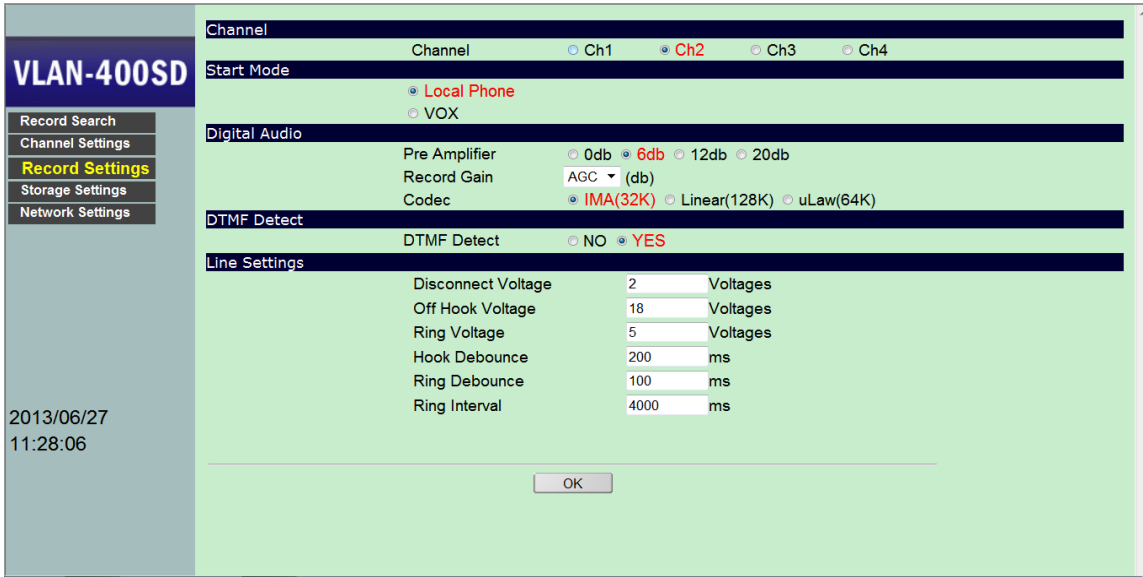
Select “Customize” to access the following dialog menu.

Set Work Hours						
Hour	Minute	-	Hour	Minute	Add	
Choose Work Days						
<input type="checkbox"/> Sunday	<input type="checkbox"/> Monday	<input type="checkbox"/> Tuesday	<input type="checkbox"/> Wednesday	<input type="checkbox"/> Thursday	<input type="checkbox"/> Friday	<input type="checkbox"/> Saturday
OK						

Select the work days and click “Add”. Enter the time period in the appropriate fields. Up to 4 different work periods can be added. To delete an entry, click its “Delete” button.

Set Work Hours						
Hour	Minute	-	Hour	Minute	Add	
8	0		12	00	Delete	
13	0		17	30	Delete	
18	03		22	00	Delete	
Choose Work Days						
<input type="checkbox"/> Sunday	<input checked="" type="checkbox"/> Monday	<input checked="" type="checkbox"/> Tuesday	<input checked="" type="checkbox"/> Wednesday	<input checked="" type="checkbox"/> Thursday	<input checked="" type="checkbox"/> Friday	<input type="checkbox"/> Saturday
OK						

3.4 Record Settings



Channel

Select the channel to be configured. Each channel must be configured separately.

Start Mode

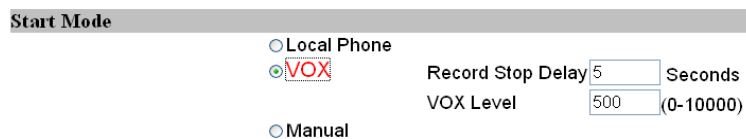
Specifies how recording should be triggered. The choices are:

Local Phone

This mode detects the handset status. Recording starts when the handset is lifted up (off hook) and stops when the handset is hung up (on hook). This mode can be used only when the logger is connected with analog phone lines.

VOX

This mode starts/stops recording based on the presence/absence of sound. Recording starts when the sound exceeds the threshold level (called the VOX level), and stops when the sound drops below the threshold level for longer than a certain period (called the Record Stop Delay). Under this mode a phone call will be recorded into several records if there are silent periods longer than the Stop Delay during the call.



- VOX Level

The default value is 500. If the level is set too low, the system becomes too sensitive and may generate bogus recordings. If the level is set too high, the system is more likely to stop recording prematurely. Start with the default value and make adjustments if necessary.

- Stop Delay

If the Stop Delay is too short, phone calls are more likely to be broken into multiple records. If the Stop Delay is too long, consecutive phone calls are more likely to be saved as one record if they occur within a short interval. Typically a value between 3 and 5 seconds works the best.

Digital Audio Parameters

Pre-Amplifier

Sets the gain (in decibels) of the pre-amplifier.

Record Gain

This helps to compensate for weak signals on the line. A higher value means a stronger boost. You can also select AGC to let the system automatically adjust the gain for each call.

Codec

The type of analog to digital conversion the system uses. The default is IMA.

IMA (32K): lowest quality but uses the least amount of memory (4KB per second)

uLaw (64K): medium quality (8KB per second)

Linear (128K): highest quality but uses the most amount of memory (16KB per second)

DTMF Detect

If enabled, the system will decode and store all touch tones occurred in the call, such as the caller ID in an inbound call and the dialed number in an outbound call.

Line Settings

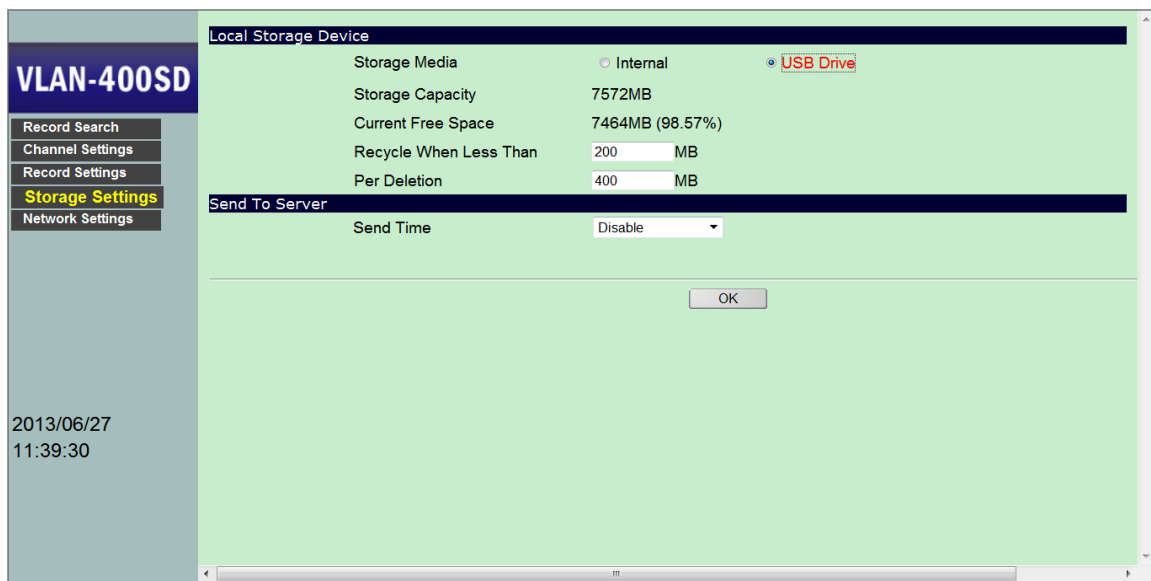
These settings are for factory use only. Please do not make any changes.

3.5 Storage Settings

The logger has a fairly large amount of internal memory for data storage. It can also be configured to use an external USB drive instead. Using an external USB drive may be quite beneficial in some cases. For example, agents of different shifts may each use a different USB drive, keeping the recorded data separate and private.

No matter how much memory there is, it will eventually be filled up with data if nothing ever gets deleted. To prevent this from happening the system automatically recycles the memory by deleting a certain amount of the oldest data when the memory is almost full. On the Storage Settings page you can set the recycle threshold and the deletion size.

It is possible to set up a storage server and configure the logger to send records to it over the network automatically on a regular basis. Such a storage server can be connected with multiple loggers for centralized data management and archiving.



Local Storage Device

Storage Media - Internal

Records will be stored in the internal flash memory.

Storage Media - USB Drive

Records will be stored in the USB drive plugged into the unit. The USB drive can be taken away by the user if privacy is needed.

To switch the storage from internal memory to USB drive, first insert the USB drive then change the Storage Media setting accordingly. The system will restart by itself and go through the initialization process. This process could take 3 to 5 minutes if the USB drive has never been used on the system before. Afterwards the system will go to the Record Search menu and resume normal operation.

To replace the USB drive with another one, always turn off the power before making the change or the system will not work properly.

To switch the storage from USB drive back to internal memory, simply change the Storage Media setting accordingly. The USB drive may be either removed or left plugged in.

Storage Capacity

The storage capacity of the selected storage media.

Current Free Space

Amount of current free space.

Recycle When Less Than

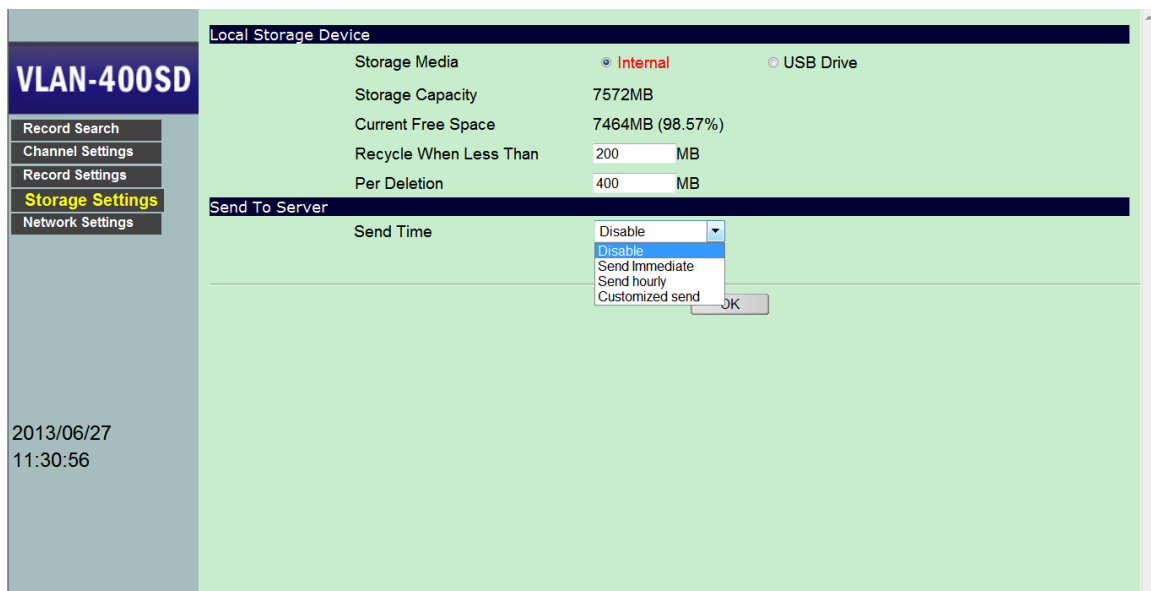
Storage recycling starts when the free space drops below this threshold level. The system deletes the oldest records in order to make room for new records. Default value is 200 MB.

Per Deletion

The amount of data to be deleted per recycling. A smaller value causes the recycling to occur more frequently, but it also allows the system to keep more old data. Default value is 400 MB.

Send To Server

In addition to storing records locally, the system can also be configured to send records to a remote server for centralized data management. When Send Time is enabled, a screen similar to the following will appear.



Send Time

Disable

Don't send.

Send Immediately

Send immediately after a call is recorded. Enter the IP address and the port number of the server.

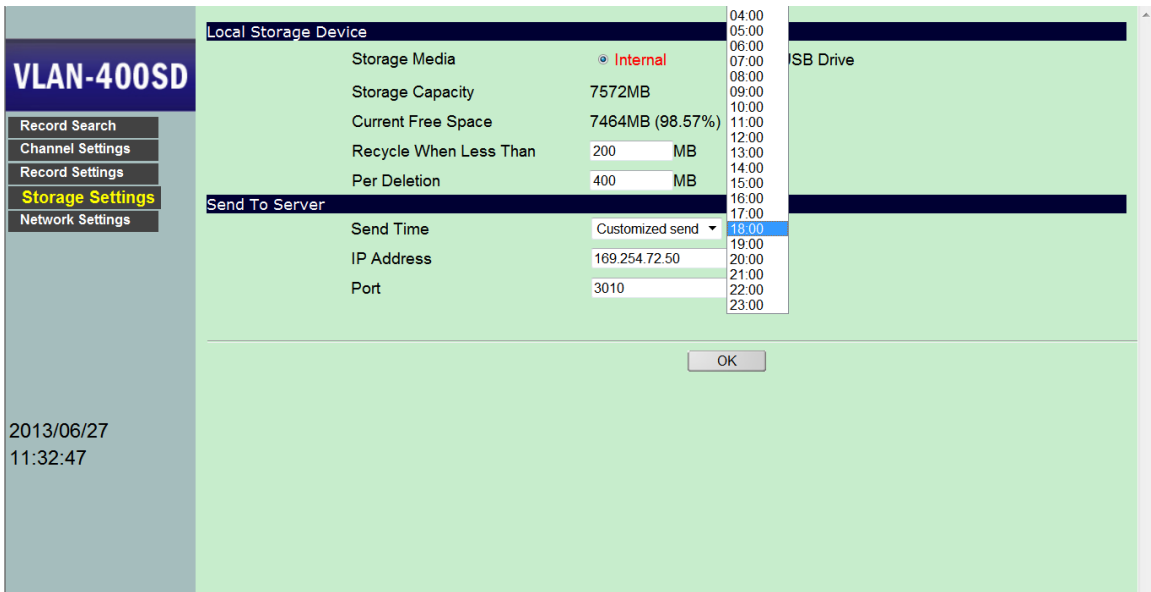
Send Hourly

Send at the hour (24 times a day). Enter the IP address and the port number of the server.

Customized Send

Send at a specific time of day, once a day.

If Customized Send is selected then a screen similar to the following will appear.



To avoid network congestion, select a time when the expected network traffic is the lightest.

3.6 Network Settings

Device Name

Enter a unique name for your own reference. This name can be used to identify the unit in a system with multiple loggers.

Administration

User Name

The default user name is “viansd”. Change it here when needed.

Password

The default password is “1234”. Change it here when needed.

If you should lose the user name and/or the password, you can reset them to the default values by pressing the Reset button on the back panel for more than 7 seconds with power turned on. Please note that all other system settings will also be reset to factory default.

LAN

DHCP Client

Enable DHCP Client if you want the router to assign an IP address for the logger. It is not recommended to enable this option.

IP Address

The default value is "192.168.1.100". The IP address should have been configured properly during the installation process, but changes can be made here if necessary.

Subnet Mask

The default subnet mask is "255.255.255.0" which should work well in most cases.

Gateway

The gateway address should be set to the same as the router's. This setting is not needed if the logger is connected to the PC directly.

DNS Server

Assign a known DNS server in your network (for NTP name server). If you don't know, enter "168.95.1.1". This setting is not needed if the logger is connected to the PC directly.

Internet Service**HTTP Server/Port**

Port number for HTTP. The default value (80) works in most cases.

Send Status To Server

If enabled, the logger will send the current recording status to a remote server which is usually the same server that the logger is configured to send records to. You must enter the server's IP address and port number (default is 3500).

SyncTime with PC

Click the button to synchronize the logger's internal clock with the PC.

NTP (Network Time Protocol)

NTP is a protocol used to synchronize clocks over the Internet. If NTP Server is enabled, the logger will automatically synchronize its clock with a NTP server once every 4 hours. Be sure to configure the DNS server if the NTP server you enter is a domain name instead of an IP address.

NTP Server

Enable and select a NTP server from the list, or you can enter the IP address of a NTP server not on the list. To get an updated list of NTP servers, visit <http://www.pool.ntp.org/en/>.

Time Zone

Select the time zone for your location.

Update Software

From time to time new software versions may become available for fixing bugs and/or adding new functions. You should enter here the server information (IP address and port number) obtained from your dealer. When it's time to update, just click the Update button.

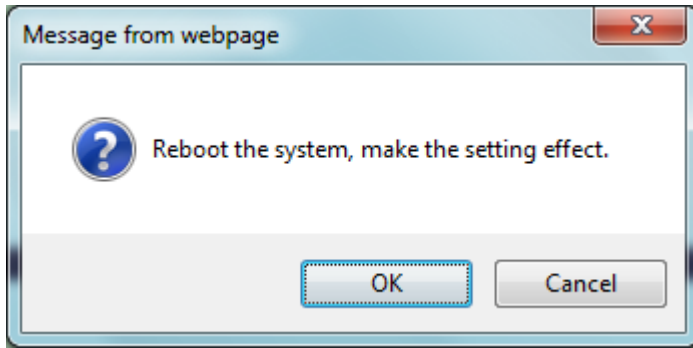
Server

The IP address of the server where the update is available. Default value is 220.130.185.195.

Port

The port number used by the server for updating software. Default value is 4030.

After changes are made in Network Settings, the system will prompt the user to restart.



Click OK to restart the system so that the changes can take effect. The system will reboot and, after the countdown on the screen is finished, resume operation.